

Product:

PSMA | ADMINISTRATIVE
BOUNDARIES

Prepared:

February 2017
Version 1.0



PSMA
AUSTRALIA

Administrative Boundaries

Data Release Report

February 2017

Revision History

| Date | Version | Change | Coordinator |
|---------------|---------|-----------------|-----------------|
| February 2017 | 1.0 | Initial Version | Anthony Hesling |
| | | | |

Disclaimer

PSMA Australia believes this publication to be correct at the time of printing and does not accept responsibility for any consequences arising from the use of information herein. Readers should rely on their own skill and judgement to apply information to particular issues.

This work is copyright. Apart from any use as permitted under the Copyright Act 1968, no part may be reproduced by any process without prior written permission of PSMA Australia Limited.

Contents

| | |
|------------------------------------|----------|
| Introduction..... | 1 |
| Document Purpose | 1 |
| Audience | 1 |
| Support | 1 |
| Overview..... | 2 |
| Updates and Issues..... | 3 |
| Updates | 3 |
| Issues | 6 |
| Future Considerations | 8 |
| Summary Statistics | 9 |
| Suburbs/Localities | 9 |
| Local Government Areas..... | 10 |
| Wards | 10 |

Introduction

PSMA's Administrative Boundaries dataset is Australia's most comprehensive national collection of boundaries including government, statistical and electoral boundaries. The dataset contains boundaries in six themes: Australian Bureau of Statistics (ABS) boundaries, electoral boundaries, state and territory boundaries, local government areas, suburbs/localities, and town points. Some of the themes, such as the ABS, include further layers of data to support a wide range of analysis and segmentation activities. For more information, please refer to the Administrative Boundaries Product Description.

Document Purpose

This document provides a description of the issues, changes, features, updates and overarching statistics relating to the applicable data release. This document should be read in conjunction with the relevant Product Description.

Audience

This document is made available to PSMA staff, data contributors, direct clients and end users. It intended to be used by business managers, data managers and analysts as a guide and reference to understanding the content and variations within a data release.

Support

PSMA Australia Support

PSMA Australia Limited

www.psmas.com.au/contact

Overview

- The February 2017 data release of Administrative Boundaries contains updates to Suburbs/Localities, Local Government Areas, Wards and ABS Boundaries.
- New Localities have been added for QLD (1), SA (1), VIC (1) & WA (1). Localities have been retired in NSW (1), QLD (2) & VIC (1).
- A new layer titled **2016 Indigenous Regions, Areas and Locations** with datasets has been added to the ABS Boundaries 2016 Theme.
- Detailed listings and Significant Area Changes can be found in the Updates and Issues section of this report.
- Summary Statistics for each theme can be found at the end of this report.

Updates and Issues

Updates

Localities

- New and retired Localities are listed below:

| Localities | | |
|-------------|-----------------|-------------------------|
| Insertions | Name | Size (km ²) |
| QLD3394 | JAMBIN | 279.6 |
| SA210006282 | OAK VALLEY | 82.5 |
| VIC3009 | CAPEL SOUND | 5.4 |
| WA3395 | TREEBY | 8.3 |
| Deletions | Name | Size (km ²) |
| NSW3024 | NORTH MACQUARIE | 2.6 |
| QLD83 | ARGOON | 170.4 |
| QLD2644 | SMOKY CREEK | 353.0 |
| VIC2200 | ROSEBUD WEST | 5.4 |

- Other spatial (area) changes greater than 1 km² for Locality boundaries are shown below:

| State | LC_PLY_PID | Name | Variation km ² (approx) | Description |
|-------|------------|--------------|---------------------------------------|---|
| NSW | 26957 | WARRUMBUNGLE | -5.1 | Decreased in size due to realigning of the boundary with TONDERBURINE locality |
| NSW | 27020 | MOORARA | -1.3 | Decreased in size due to realigning of the boundary with PAN BAN and POONCARIE localities |
| NSW | 27016 | CALDERWOOD | 3.6 | Increased in size due to realigning of the boundary with TULLIMBAR and the removal of the locality of NORTH MACQUARIE |
| NSW | 26946 | TONDERBURINE | 5.1 | Increased in size due to realigning of the boundary with WARRUMBUNGLE locality |
| QLD | 63569 | BASALT | -111.2 | Decreased in size due to realigning of the boundary with SOUTHERN CROSS locality |
| QLD | 63876 | ULOGIE | -30.6 | Decreased in size due to realigning of the boundary with GOOVIGEN locality |
| QLD | 63690 | GREYCLIFFE | -16.3 | Decreased in size due to realigning of the boundary with GOOVIGEN and JAMBIN (new locality) |

| State | LC_PLY_PID | Name | Variation km ² (approx) | Description |
|-------|------------|----------------|---------------------------------------|--|
| QLD | 63771 | SOUTHWOOD | -12.7 | Decreased in size due to realigning of the boundary with LUNDAVRA and WESTMAR localities |
| QLD | 63867 | TEELBA | -9.1 | Decreased in size due to realigning of the boundary with COOMRITH locality |
| QLD | 63748 | MUNDERRA | -8.6 | Decreased in size due to realigning of the boundary with BARWIDGI locality |
| QLD | 63743 | FLINTON | -5.0 | Decreased in size due to realigning of the boundary with NORTH BUNGUNYA locality |
| QLD | 63625 | CLIFFORD | -3.7 | Decreased in size due to realigning of the boundary with YULEBA NORTH and WALLUMBILLA NORTH localities |
| QLD | 63693 | DUMGREE | -2.9 | Decreased in size due to realigning of the boundary with CALLIDE locality |
| QLD | 63685 | GALILEE | -2.5 | Decreased in size due to realigning of the boundary with DUNROBIN locality |
| QLD | 63838 | WAIKOLA | -1.6 | Decreased in size due to realigning of the boundary with DURHAM DOWNS locality |
| QLD | 63694 | DANGORE | -1.1 | Decreased in size due to realigning of the boundary with GORDONBROOK, BALLOGIE and CHAHPINGAH localities |
| QLD | 63758 | DURHAM DOWNS | 1.6 | Increased in size due to realigning of the boundary with WAIKOLA locality |
| QLD | 63745 | DUNROBIN | 2.9 | Increased in size due to realigning of the boundary with GALILEE locality |
| QLD | 63885 | YULEBA NORTH | 3.6 | Increased in size due to realigning of the boundary with CLIFFORD locality |
| QLD | 63773 | NORTH BUNGUNYA | 4.6 | Increased in size due to realigning of the boundary with FLINTON locality |
| QLD | 63568 | BARWIDGI | 8.3 | Increased in size due to realigning of the boundary with MUNDERRA locality |
| QLD | 63638 | COOMRITH | 9.1 | Increased in size due to realigning of the boundary with TEELBA locality |
| QLD | 63829 | LUNDAVRA | 11.8 | Increased in size due to realigning of the boundary with SOUTHWOOD locality |
| QLD | 63617 | CALLIDE | 22.1 | Increased in size due to realigning of the boundary with JAMBIN (New Locality) and DUMGREE locality |
| QLD | 63769 | SOUTHERN CROSS | 111.2 | Increased in size due to realigning of the boundary with BASALT locality |

| State | LC_PLY_PID | Name | Variation km ² (approx) | Description |
|-------|------------|------------|---------------------------------------|--|
| QLD | 63671 | GOOVIGEN | 271.6 | Increased in size due to realigning of the boundary with JAMBIN (New locality), GREYCLIFFE and ULOGIE Localities |
| TAS | 4796 | WEST COAST | 2.4 | Increased in size due to realigning of the boundary with the coastline |
| TAS | 4778 | SOUTHWEST | 2.6 | Increased in size due to realigning of the boundary with the coastline |
| WA | 16477 | BANJUP | -8.3 | Decreased in size due to realigning of the boundary with the new locality of TREEBY |
| WA | 16491 | EAST PERTH | 1.1 | Increased in size due to realigning of the boundary with the Swan River boundary |
| WA | 16522 | PERTH | 1.4 | Increased in size due to realigning of the boundary with the Swan River boundary |
| WA | 16493 | CRAWLEY | 3.7 | Increased in size due to realigning of the boundary with the Swan River boundary |

Local Government Areas (LGAs)

- New and Retired LGAs are listed below:

| LGAs | | |
|------------|-------------------------|-------------------------|
| Insertions | Name | Size (km ²) |
| SA149 | ADELAIDE PLAINS COUNCIL | 934.7 |
| Deletions | Name | Size (km ²) |
| SA125 | THE DC OF MALLALA | 934.7 |

- Other Spatial (Area) Changes greater than 1 km² for LGA boundaries are shown below:

| State | LG_PLY_PID | Name | Variation km ² (approx) | Description |
|-------|------------|---------------|---------------------------------------|---|
| QLD | 3394 | WESTERN DOWNS | -13.1 | Decreased in size due to realigning of the boundary with MARANOA and GOONDIWINDI local government areas |
| QLD | 3405 | MARANOA | -3.7 | Decreased in size due to realigning of the boundary with WESTERN DOWNS local government area |
| QLD | 3401 | GOONDIWINDI | 16.4 | Increased in size due to realigning of the boundary with WESTERN DOWNS local government area |

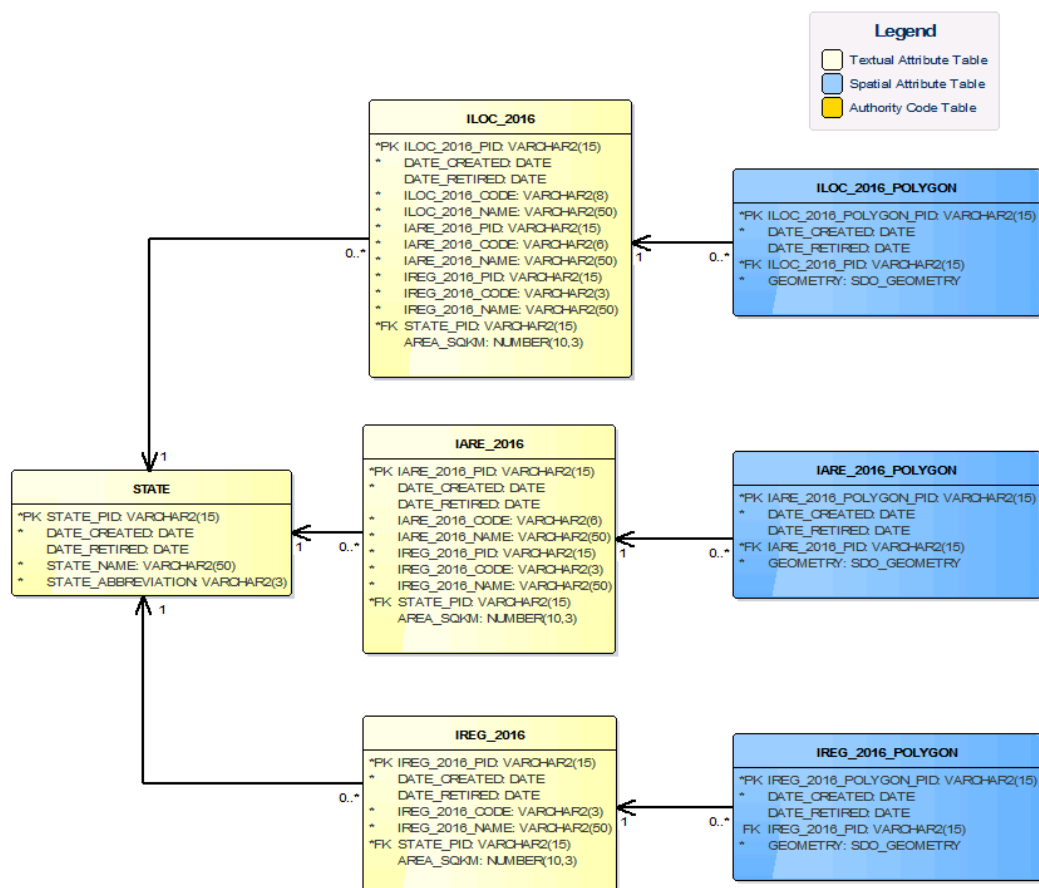
Wards

- There are no new or retired Wards for the February 2017 Release
- The Spatial (Area) Changes greater than 1 km² for WARD boundaries are shown below:

| State | WD_PLY_PID | Name | Variation km ² (approx) | Description |
|-------|------------|------------------|---------------------------------------|---|
| WA | 1636 | BOYUP BROOK WARD | -1.6 | Decreased in size due to realigning of the boundary with BENJINUP WARD |
| WA | 1633 | BENJINUP WARD | 1.6 | Increased in size due to realigning of the boundary with BOYUP BROOK WARD |

ABS Boundaries

A new layer titled **2016 Indigenous Regions, Areas and Locations** has been added to the ABS Boundaries 2016 Theme. The following diagram shows the additional tables in the data model for the 2016 ABS Indigenous data.



The tables included in the 2016 ABS Indigenous Regions, Areas and Locations are detailed in the Administrative Boundaries product description.

Issues

- There were no significant issues in this release.

Future Considerations

ABS Boundaries

- The ABS 2016 mesh blocks currently do not have the population and dwelling counts included. It is expected that the ABS will release this data after July 2017. PSMA anticipates that these fields will be populated in the August 2017 release.

Summary Statistics

- Counts representing the number of records in each table are listed below, including the change since the previous Release.

Suburbs/Localities

| Jurisdiction | Table | Previous Release | Previous Count | Current Count | Percentage Change |
|--------------|------------------|------------------|----------------|---------------|-------------------|
| ACT | LOCALITY | Nov-16 | 136 | 136 | 0.00 |
| ACT | LOCALITY_POLYGON | Nov-16 | 136 | 136 | 0.00 |
| NSW | LOCALITY | Nov-16 | 4553 | 4552 | -0.02 |
| NSW | LOCALITY_POLYGON | Nov-16 | 4573 | 4572 | -0.02 |
| NT | LOCALITY | Nov-16 | 306 | 306 | 0.00 |
| NT | LOCALITY_POLYGON | Nov-16 | 312 | 312 | 0.00 |
| OT | LOCALITY | Nov-16 | 5 | 5 | 0.00 |
| OT | LOCALITY_POLYGON | Nov-16 | 6 | 6 | 0.00 |
| QLD | LOCALITY | Nov-16 | 3275 | 3274 | -0.03 |
| QLD | LOCALITY_POLYGON | Nov-16 | 3328 | 3327 | -0.03 |
| SA | LOCALITY | Nov-16 | 2421 | 2422 | 0.04 |
| SA | LOCALITY_POLYGON | Nov-16 | 2450 | 2451 | 0.04 |
| TAS | LOCALITY | Nov-16 | 775 | 775 | 0.00 |
| TAS | LOCALITY_POLYGON | Nov-16 | 781 | 781 | 0.00 |
| VIC | LOCALITY | Nov-16 | 2962 | 2962 | 0.00 |
| VIC | LOCALITY_POLYGON | Nov-16 | 2962 | 2962 | 0.00 |
| WA | LOCALITY | Nov-16 | 1693 | 1694 | 0.06 |
| WA | LOCALITY_POLYGON | Nov-16 | 1729 | 1730 | 0.06 |

Local Government Areas

| Jurisdiction | Table | Previous Release | Previous Count | Current Count | Percentage Change |
|--------------|--------------|------------------|----------------|---------------|-------------------|
| NSW | LGA | Nov-16 | 130 | 130 | 0.00 |
| NSW | LGA_LOCALITY | Nov-16 | 4987 | 4986 | -0.02 |
| NSW | LGA_POLYGON | Nov-16 | 197 | 197 | 0.00 |
| NT | LGA | Nov-16 | 25 | 25 | 0.00 |
| NT | LGA_LOCALITY | Nov-16 | 318 | 318 | 0.00 |
| NT | LGA_POLYGON | Nov-16 | 812 | 812 | 0.00 |
| QLD | LGA | Nov-16 | 78 | 78 | 0.00 |
| QLD | LGA_LOCALITY | Nov-16 | 3362 | 3361 | -0.03 |
| QLD | LGA_POLYGON | Nov-16 | 209 | 209 | 0.00 |
| SA | LGA | Nov-16 | 73 | 73 | 0.00 |
| SA | LGA_LOCALITY | Nov-16 | 2064 | 2064 | 0.00 |
| SA | LGA_POLYGON | Nov-16 | 168 | 168 | 0.00 |
| TAS | LGA | Nov-16 | 29 | 29 | 0.00 |
| TAS | LGA_LOCALITY | Nov-16 | 886 | 886 | 0.00 |
| TAS | LGA_POLYGON | Nov-16 | 4357 | 4357 | 0.00 |
| VIC | LGA | Nov-16 | 87 | 87 | 0.00 |
| VIC | LGA_LOCALITY | Nov-16 | 3326 | 3326 | 0.00 |
| VIC | LGA_POLYGON | Nov-16 | 92 | 92 | 0.00 |
| WA | LGA | Nov-16 | 137 | 137 | 0.00 |
| WA | LGA_LOCALITY | Nov-16 | 1736 | 1737 | 0.06 |
| WA | LGA_POLYGON | Nov-16 | 165 | 165 | 0.00 |

Wards

| Jurisdiction | Table | Previous Release | Previous Count | Current Count | Percentage Change |
|--------------|--------------|------------------|----------------|---------------|-------------------|
| NT | WARD | Nov-16 | 53 | 53 | 0.00 |
| NT | WARD_POLYGON | Nov-16 | 835 | 835 | 0.00 |
| SA | WARD | Nov-16 | 148 | 148 | 0.00 |
| SA | WARD_POLYGON | Nov-16 | 154 | 154 | 0.00 |
| VIC | WARD | Nov-16 | 271 | 271 | 0.00 |
| VIC | WARD_POLYGON | Nov-16 | 275 | 275 | 0.00 |
| WA | WARD | Nov-16 | 209 | 209 | 0.00 |
| WA | WARD_POLYGON | Nov-16 | 238 | 238 | 0.00 |